



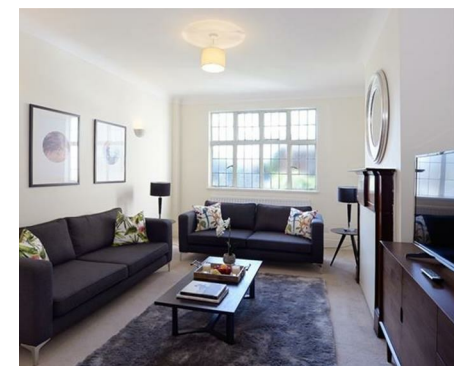
Let **UK** Home

**5 Bedrooms**

**Flat**

Located in London

**£7,800 Per Month**



[info@letukhome.co.uk](mailto:info@letukhome.co.uk)

<https://www.letukhome.co.uk/>

01795 358 886



# 143 Park Road London

## NW8 7HY



Let UK Home are excited to offer an outstanding five bedroom apartment located on the first floor in a prestigious portered mansion block.

This bright apartment benefits with over 1937 sq ft of living space and comprises five double bedrooms (two with en-suite bathrooms), modern fitted kitchen, utility room, two guest cloakrooms, modern fitted bathroom and ample hallway storage space.

Located close to all local amenities and great transport links, Strathmore Court would be ideally suited to young professionals or students due to its proximity to the West End, as well as a number of top colleges and universities such as London Business School, University of Westminster and the Royal College of Physicians.

Covering nearly 395 acres, the spectacular Grade I listed Regent's Park located opposite Strathmore Court offers a variety of family-oriented entertainment. Also within reach of these NW8 apartments is Lords Cricket Ground and the award-winning St. John's High Street lined with bars, high-end restaurants and boutique shops.

# 143 Park Road London

£7,800 Per Month

- 1st Floor
- Two en-suite bathrooms
- Superfast Broadband
- 24 hour maintenance service
- Available furnished or unfurnished
- Five double bedrooms
- Pet Friendly
- Dedicated building manager
- Video Entry & Porter
- EPC Rating: C





Let **UK** Home

3F 2 Eastbourne Terrace  
 Paddington  
 London  
 W2 6LG

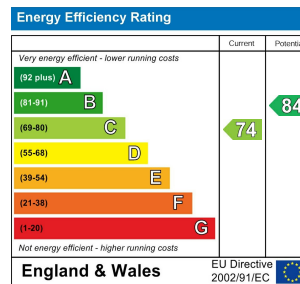
01795 358 886

info@letukhome.co.uk

**Council Tax Band: E**

**Local Authority:**

Agents Note: Whilst every care has been taken to prepare these particulars, they are for guidance purposes only. All measurements are approximate and are for general guidance purposes only and whilst every care has been taken to ensure their accuracy, they should not be relied upon and potential buyers/tenants are advised to recheck the measurements.



<https://www.letukhome.co.uk/>